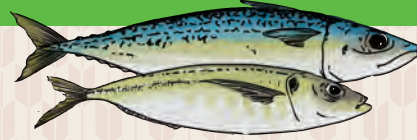


Kabosu



Seki Saba & Seki Aji



Otomo Sorin



Funai Patchin



Kasuga Shrine



Mt. Takasaki



Funai Castle Ruins

Let's explore Oita City!

# OITA *city* TRAVEL GUIDE

# Let's explore Oita City!



## EVENTS

- Apr. ● Ken Hachimangu Shrine Annual Spring Festival
- Yasaka-jinja Shrine Spring Festival
- ▼ Sasamuta Shrine Wisteria Festival



This famous wisteria viewing event is held from late April to early May at Sasamuta Shrine. Aside from wisteria flowers, visitors can also enjoy azaleas, traditional Japanese song and dance performances, and Kagura, a Shinto ritual dance.

- May ● Hayasuhime-jinja Shrine Wisteria Festival
- Manko-ji Temple Market

- Jul. ● Nagahama-jinja Shrine Summer Festival
- Kasuga-jinja Shrine Summer Festival
- Lord Kiyomasa 23rd Night Festival
- ▼ Nanase Fire Festival



This festival is held to pray for a bountiful harvest and to ward off disease. The remarkable events with roaring flames flying all around and fireworks that light up the night sky are a must-see.

- Seki no Gongen and Hayasuhime-jinja Shrine Summer Festival
- Yusuhara Hachimangu Nagoshi Festival

- Aug. ▼ Oita Tanabata Festival



The largest festival in Oita Prefecture. Decorations are placed all over the city, and at night, illuminated floats called "Funaiatchin" that have pictures of heroic warriors painted on them parade through the city.

- Aug. ▼ Honba Tsurusaki Dance Festival



This traditional dance has been passed down through generations for over 450 years. Dancers wear beautiful costumes and dance along to musical accompaniment in this classic Oita summer tradition.

- Seishoko Festival

- Sep. ● Kaku no Ichi Festival
- Seki no Tai Tsuru Dance Festival
- Hama no Ichi Autumn Festival at Yusuhara Hachimangu Shrine

- Oct. ▼ Oita Cycle Fes



UCI (Union Cycliste Internationale) sanctioned cycling race held in Oita City. This annual event is crowded with cycling enthusiasts from Japan and abroad.

- Oita Food and Living Festival
- Sorin Festival
- Oita Yumeiro Music Festival
- Amabe Festival

- Nov. ● Toyonokuni Yosakoi Festival
- Notsuharu Nanase Village Festival
- ▼ Ono River Battle Festival



This festival is based on the 1586 civil war battle of Hetsugigawa. The impressive procession of warriors, cavalry, and artillery is a must-see.

- Nov. ▼ Oita International Wheelchair Marathon



The world's first international wheelchair marathon was held in 1981. This annual event gathers the world's best wheelchair racers in Oita City.

- Takasakiyama Natural Zoological Garden Free Admission Day

- Dec. ▼ Oita Fantasy Lights Event



Approximately 430,000 colorful LED lights brighten up the city centre in winter.

- Jan. ● Ice Bath Purification Ritual
- Futamegawa Momote Festival

- Feb. ▼ Beppu-Oita Mainichi Marathon



Japan's most prestigious international marathon. It is known as a good course for fast times. Runners can feel the gentle sea breeze as they run on the flat path along the Betsudai road.

- Yoshino Plum Blossom Festival

- Mar. ● Seki Saba and Seki Aji Festival
- Oita Greenery Fair



Yearly event info

## CONTENTS

Events .....	2
History and Nature	
Discover the history of Oita City .....	3
Immersive experiences .....	5
Explore your taste buds .....	7
Western Coastal Area .....	9
Experience Art .....	10
Onsen .....	11
Souvenirs .....	12
City Map .....	13

## SYMBOLS

### ■ Accessibility Information



Accessible Parking Space



Access Ramp



Accessible Elevator



Ostomy Friendly Facility



Accessible Restroom



Lactation Room

# History and Nature

## Discover the history of Oita City

Footsteps of extraordinary individuals, cityscapes that reflect the atmosphere of those days, and valuable historical sites... Why not take a trip to unravel the history of Oita City?



Statue of St. Francis Xavier



Statue of Itō Mancio

### Yuho Park Sculptures

Yuho Park is located in downtown Oita where you can enjoy many works of art by some of Oita's leading sculptors.



### Funai Castle Ruins

Selected as one of the 100 best castles in Japan. Construction of the beautiful white earthen-walled castle was completed in 1602 and it is now maintained as a park. The cherry blossoms here are breathtaking in the spring.



Trace the footsteps of the Christian daimyo and the pride of Oita,

# Otomo Sorin



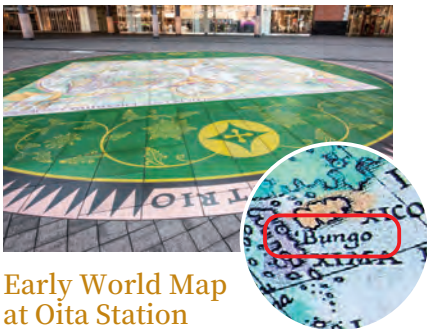
## Otomo Sorin (Yoshishige)

A Christian daimyo (feudal lord) who ruled over Oita City around 1550. He was the first leader in Japan to introduce Western-style hospitals, music, and theater.

## Otomo Ruins Discovery Center



Located where Otomo Sorin's mansion once stood. Visitors can learn the historic past via mixed media such as the stunning realistic images. You can also take photos in historic costumes. The restored outdoor garden is also a sight to behold!



## Early World Map at Oita Station Funai Central Exit Plaza

A map made in Europe in the 16th century. Kyushu is written as "Bungo", the name of Oita at that time.



## Manju-ji Temple

A temple built in 1306 by Sadachika, the fifth head of the Otomo clan. Under the protection of Otomo, it played an important role in religion, politics, and culture.



## Wakamiya Hachimansha Shrine

The shrine is said to have been built by Yoshinao, the first head of the Otomo clan. Successive heads of the Otomo clan treasured it as the village shrine of Bungo Funai (present-day Oita City).



## Yusuhara Hachimangu Shrine

This historic shrine is designated as a National Important Cultural Property. The shrine grounds are home to a sacred camphor tree that is over 3,000 years old.



## Hoashi Honke Sake Brewery

A sake brewery located in the historical town of Hetsugi Honmachi. Traditional tools and barrels used in the brewing of sake are on display.



## Hetsugi Honmachi

It once flourished as an important transportation hub during the Edo period. It still maintains a valuable historical townscape.



## Kasuga-jinja Shrine

An ancient shrine built in 860. Beautiful green trees surround the temple grounds, making it a perfect place to take a stroll.



## Kamezuka-kofun Tomb Park

Built in the early 5th century, this is the largest keyhole-shaped tomb in the prefecture with a total length of about 120 meters. The surrounding area has been preserved as a park with a museum and walking trails.



## Hayasuhime-jinja Shrine

A shrine dedicated to warding off evil and bringing good luck. It is known for its "takodachi kigan," a prayer practice that is said to grant wishes to those who dedicate octopus pictures to the shrine and abstain from eating octopus within a certain period of time.





# Immersive experiences

## Forest Bathing Trails

Enjoy one of Oita City's many walking courses. Heal your body and soul while taking a leisurely stroll in the woods.



Activity info



### Ueno Forest Bathing Trail

This course starts near Oita Station and makes its way to Oita Art Museum and Ueno Forest. You can take a leisurely walk through a magnificent evergreen forest and appreciate works of art all on the same course.



### Momi Fir Mountain Forest Bathing Trail

This trail winds its way up to the summit of Mt. Momi through the simple and peaceful countryside of the Kisagami area of Oita City. The view of the Bungo Channel from the summit is spectacular.



## Cycling

Take in the beautiful scenery and abundant nature of Oita City while cycling. You may even discover something new that you wouldn't have noticed through a train or car window.



### Hetsugi Honmachi Ono-gawa River Route

This course starts in the historic area of Hetsugi Honmachi and follows along the Ono River. Much of the course is flat, so anyone can enjoy a nice stroll.





## Nanase Dam

Made of natural rock and earth, the dam has a beautiful rock-filled embankment. The view from the lookout is breathtaking, and visitors can enjoy walking or biking around the reservoir.



## Notsuharu Roadside Station



This roadside station overlooking the Nanase Dam is a good place to take a break or have a meal while taking a drive. You can also enjoy gourmet food made from local farm products.



## Saganoseki Roadside Station



Visitors can buy souvenirs and enjoy eating fresh seafood while taking in the beautiful view of the ocean.



## Takashima Island Cruise

Black-tailed gulls fly to Takashima Island from April to July every year. You can feed them while enjoying a leisurely cruise along the Bungo Channel.



## Amanatsu Orange Picking

Mid-April - Mid-May

Enjoy picking refreshingly sweet and perfectly ripened Amanatsu orange, a specialty of Saganoseki.



## Blueberry Picking

Early July - Early September

Picking blueberries is a popular activity in the summer due to the health benefits of these organically grown blueberries.



## Strawberry Picking

Mid-December - Late May

In addition to picking delicious Oita strawberries, visitors can also eat them on the spot.



## Suibokuga (Japanese Ink Painting)

This traditional style of painting utilizes different shades of ink to create beautiful pictures. You can give it a try at Jokei-ji Temple in Saganoseki, Oita City.



## Pottery Workshop

At Toki no Tane, even beginners can enjoy making pottery while learning from the artist. Get in touch with your artistic side and discover what you can create!



## Sano Botanical Garden



A botanical garden rich in nature. The vast grounds include a greenhouse, a grass field, a play area filled with playground equipment, and a 60-meter-long slide.





### Oita Wagyu (Bungo Beef)

This Oita brand beef once won the top prize in Japan. It has a rich, decadent flavor and beautiful marbling that will melt in your mouth.



### Seki Saba and Seki Aji

Famous Oita City top brand mackerel and horse mackerel that are caught by using a single-hook handline fishing technique. You can enjoy its distinctive texture and umami flavor.

# Explore your taste buds



Food and restaurant info



### Nirabuta (Stir-fried pork with garlic chives)

This comfort food style gourmet dish originated in Oita City. Garlic chives, pork, and cabbage are stir-fried in a soy-based sauce for a simple yet addictive taste.



### Ryukyu (Marinated Sashimi)

This local dish originated as an easy meal for fishermen and as a preserved food. It is made by marinating fresh fish in a special sauce. It's the perfect companion for sake or rice!



### Dango Jiru (Dumpling soup)

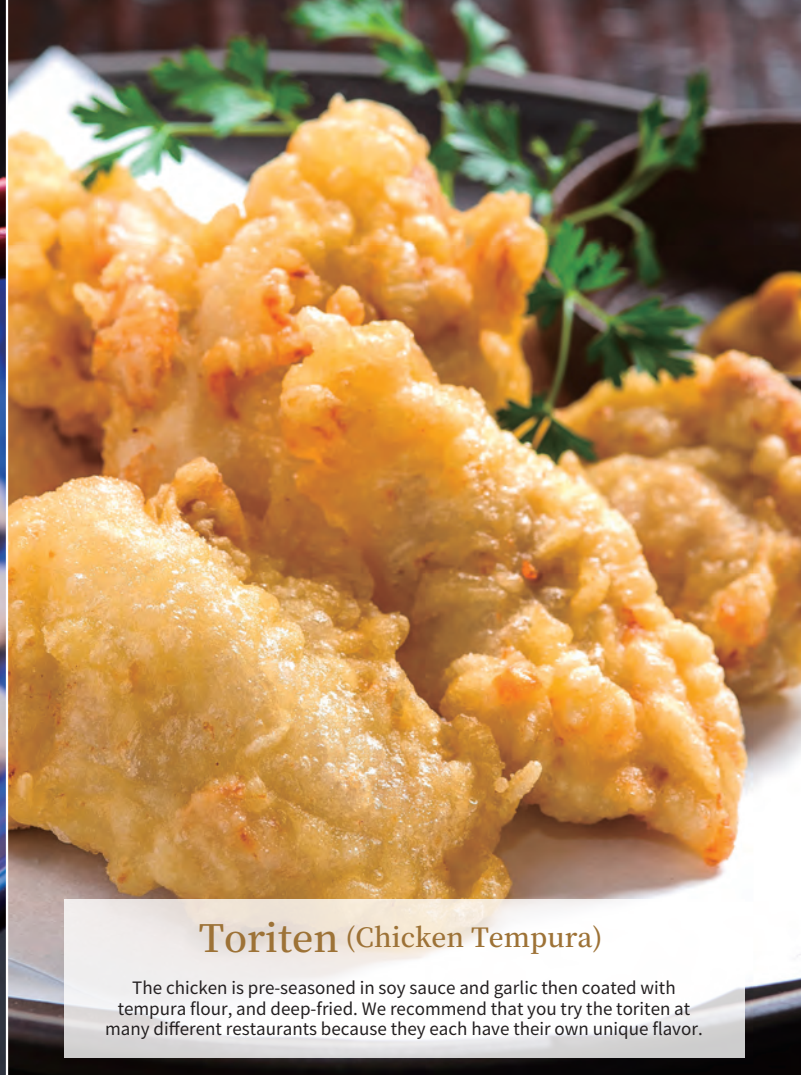
This classic home-style soup is made from seasonal vegetables simmered in a miso broth with flat noodle-like dumplings that have a nice chewy texture.





### Oita Fugu (Pufferfish)

The firm meat has a unique texture and just a hint of sweetness. You can enjoy it in a variety of ways all year round, such as sashimi and deep-fried.



### Toriten (Chicken Tempura)

The chicken is pre-seasoned in soy sauce and garlic then coated with tempura flour, and deep-fried. We recommend that you try the toriten at many different restaurants because they each have their own unique flavor.



豊後料理  
ぶんごりょうり

### BUNGO CUISINE

The food culture of Oita is drawn from the wide range of wonderful ingredients native to the region which have been shaped by the area's terrain, climate, and historical cultivation.



### Yaseuma (Sweet Noodles)

This simple yet elegant snack is made from flattened wheat flour noodles that have been sprinkled with soybean flour and sugar. It is a local favorite!



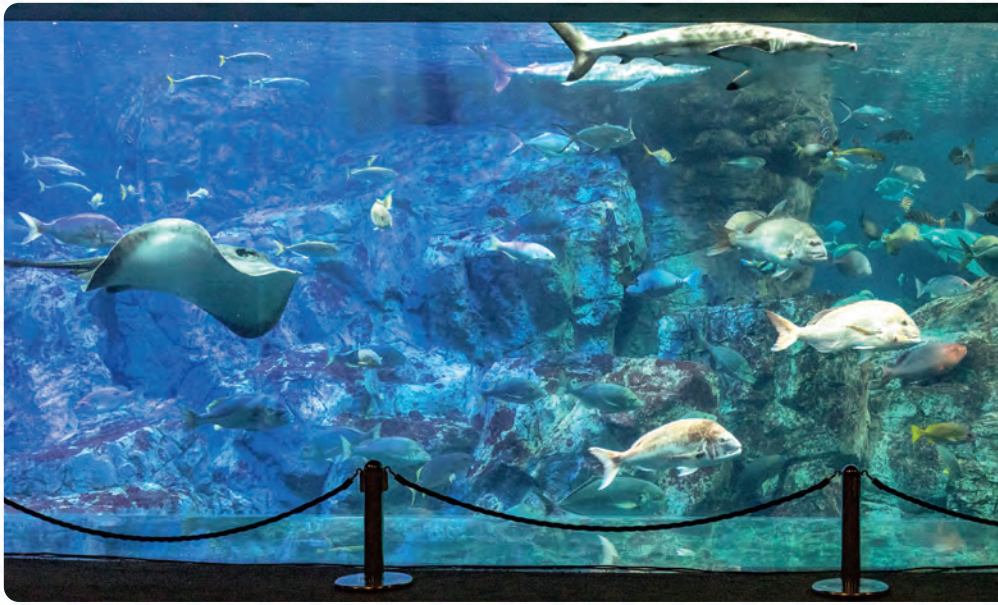
### Torimeshi (Seasoned rice with chicken)

A local dish consisting of rice mixed with shredded chicken, burdock root, carrots, and other ingredients. Torimeshi from the Yoshino area is especially famous.



### Kabosu

A citrus fruit that not only enhances the flavor of ingredients with its refreshing juice but also helps alleviate fatigue. Oita Prefecture is the largest producer of kabosu in Japan.



# 愉 Western Coastal Area

The western coastal area overlooking Beppu Bay has the best mountain views and seascapes Oita City has to offer!

## 1 Oita Marine Palace Aquarium Umitamago



The sharks and fish swimming in the large migratory tank are a thrilling sight to behold! From the café, you can enjoy having lunch or getting a snack while looking out at the ocean.

## 2 Tanoura Beach



A beach rich in nature that stretches along Beppu Bay. The small island that protrudes into the bay has a tropical atmosphere and is popularly known as being a lover's sanctuary.

## 3 Kantan Harbor Park



This bayside area has grassy plazas, a dog run, cafes, and various small shops. You can also enjoy the sparkling view at night.

## 4 Takasakiyama Natural Zoological Garden



One of the prominent zoos in Japan where you can observe wild Japanese monkeys up close and personal. You can watch the cute baby monkeys playing freely in their natural mountain environment.



# Experience Art

Oita City is the City of Art! In addition to remarkable art museums, you can also enjoy a wide variety of artwork spread throughout the city.



Public art info

## 5 Oita Prefectural Art Museum (OPAM)



Designed by world-renowned architect Shigeru Ban. The glass exterior, international exhibitions, and tactile artworks are unrivaled in their attention to detail.



### OPAM Museum Shop

They offer a wide range of products under the theme of "Art you wear," "Art you play with," and "Art you eat," which were made in collaboration with local artists.



## 6 Oita Art Museum



Many works of art associated with Oita Prefecture are on display here. Outside the museum, there is a beautifully maintained park where you can enjoy art that you can touch and a spectacular view of the surrounding area.



## 7 Art Plaza



An art and culture complex designed by the world-renowned Oita-born architect Arata Isozaki. The permanent exhibition that displays Mr. Isozaki's numerous achievements is also a popular attraction.



## 8 Oita Bank Red Brick Hall



This building was designed by Kingo Tatsuno, the father of modern Japanese architecture. He is also known for his Tokyo Station building design and many others. Inside there is a café and a store selling locally produced goods.



### Oita Made

This shop offers a wide variety of products that reflect Oita's unique culture and materials.



## 9 Downtown Public Art

Artwork is always just a short walk away here in Oita City. Take a leisurely stroll and see what you find!

# Onsen

Unlike those in Beppu and Yufuin, the onsen in Oita City are non-volcanic. They contain high levels of carbon dioxide gas derived from ancient plants and are known as some of the world's rarest onsen for beautiful skin.

## // Attention //

Please note that some facilities may refuse access to tattooed guests.



Tattoo-friendly Facility



Tattooed guests have access to private baths only



Onsen info



### Atami Onsen

This old-fashioned hot spring has been serving locals and tourists since 1957.



### Amanogawa Natural Onsen

Enjoy the open-air baths, jacuzzis, saunas, and private baths.



### Marutaya Onsen Saihonoyu

A tropical resort-style onsen facility. The open-air baths and sauna overlooking the ocean will refresh your body and soul.



### Kanzaki Onsen Tenkai no Yu

This onsen situated on a hill has two large separate public baths for men and women and seven private baths, all with their own stunning view of the ocean.



### Funai Onsen

The facility is conveniently located in downtown Oita. Its natural hot spring water flows directly from the source, so it does not require any heating, circulation, or additional water.



\* Private baths only

### City Spa Tenku

This facility has natural onsen located on the 19th and 21st floors of the train station building. The view from the open-air bath 80 meters above the ground is breathtaking. There is also a spa and a café-bar.





### ▶ Sake Soko "Sara" Junmai Daiginjo

A refreshing and delicate-tasting sake. Three-year consecutive special award first prize winner of the Japanese sake contest.



### ▶ Kabosu Rin

A refreshing juice jelly made from kabosu peels. It is also delicious when eaten as a sorbet.



## Souvenirs



### ▶ Ecoota

Light and durable sashiko stitch woven fabric is an original Ecoota product based on traditional Japanese patterns.

### ▶ Setsugekka

Mochi rice cracker sandwich with sweet yuzu jam filling.



### ▶ Pesto-Style Oba Sauce

Made with oba (perilla leaves) grown right here in Oita City! This delicious and versatile sauce not only goes well with pasta and pizza but also with sautéed meat, fish, salads, and many more.

### ▶ Zabieru

A delicious Oita confectionery named after the Christian missionary Francis Xavier who was given asylum by the feudal lord Otomo Sorin. The combination of biscuit-like dough and white sweet bean paste is exquisite.



### ▶ Bomdia

Baked pastry made from crushed walnuts kneaded into sweet red bean paste and wrapped in pie crust. It's characterized by its subtle sweetness and rich flavor.

### ▶ Bungo Famous Confection Yaseuma

Yaseuma is an old favorite sweet in Oita. This bite-size version of yaseuma is a chewy confection made from homemade soybean paste wrapped in soft rice flour.



### ▶ Oita Satoyama Honey

Old-fashioned honey from a small village at the foot of Mt. Takasaki. It has a distinctive aroma of wildflowers and a mild sweetness.



### // Major Retailers //

#### ● Tokiwa Main Branch

2-1-4 Funai-machi, Oita City  
+81-97-538-1111

#### ● Tokiwa Wasada Town

Tamazawa, Oaza, Oita City  
+81-97-586-1111

#### ● Amu Plaza Oita

1-14 Kaname-machi, Oita City  
+81-97-513-1220

#### ● Park Place Oita

2-1 Koendori Nishi, Oita City  
+81-97-520-7777



More  
souvenirs  
listed here!



Duty-free  
shop  
info

### Oita Birth

Food products made with Oita City's unique local ingredients are certified as "Oita Birth." Enjoy a taste of Oita City!



# CITY MAP

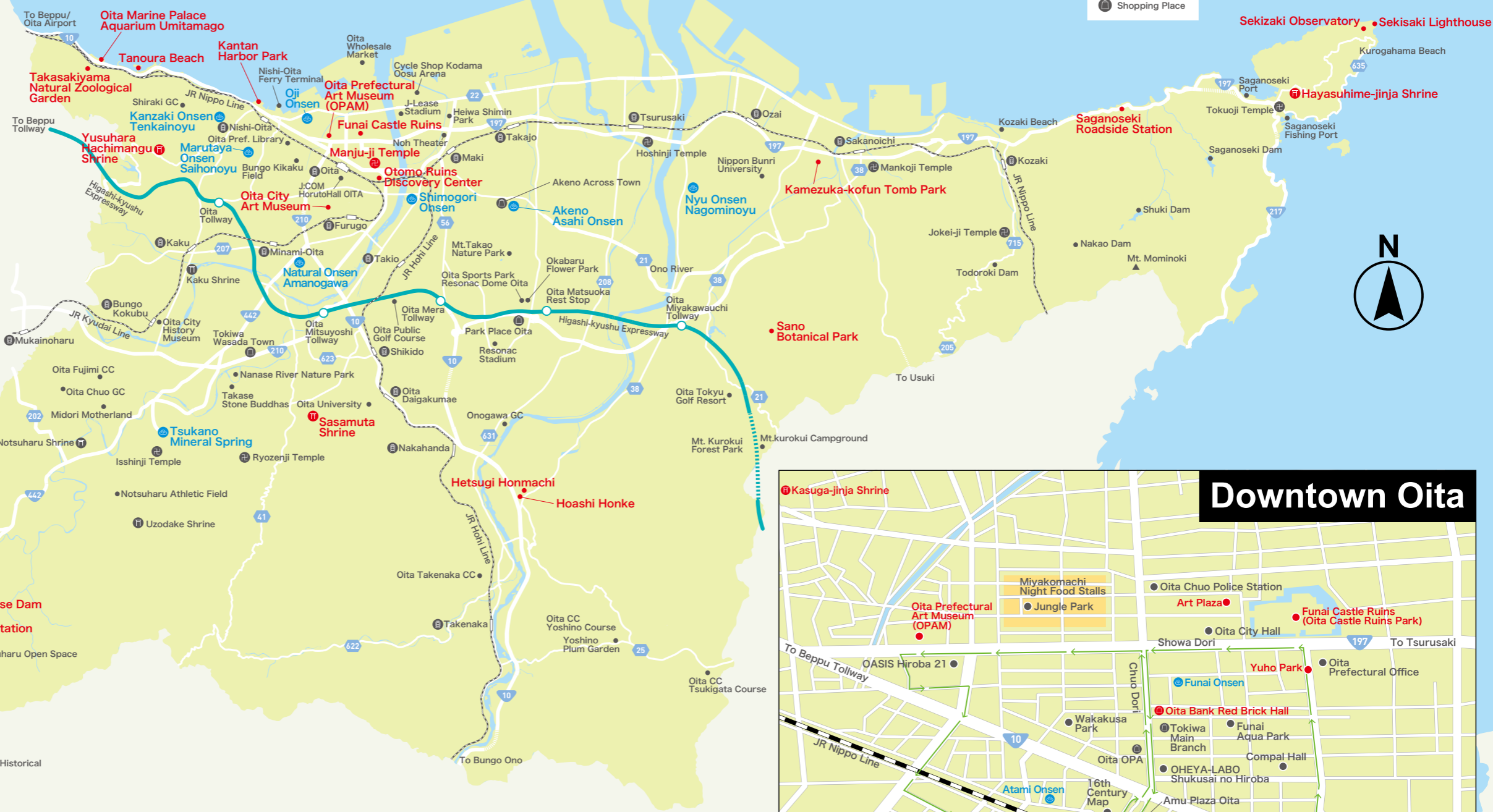
**Map Legend**

- Tourist Spots
- Onsen
- Ⓜ Shrine
- Ⓜ Temple
- Ⓜ Train Station
- Ⓜ Shopping Place



## How to Get to Oita City

From	To	Approx. Travel Time
Airplane		
Tokyo (Haneda)	Oita Airport (Kunisaki City)	1 hr 45 mins
Tokyo (Narita)		1 hr 55 mins
Osaka (Itami)		1 hr
Nagoya		1 hr 15 mins
Oita Airport	Oita City	1 hr
JR Train		
Hakata	Oita City	2 hrs
Kokura		1 hr 25 mins
Nagasaki		4 hrs
Kumamoto		3 hrs 10 mins
Miyazaki		3 hrs 10 mins
Shin-Osaka	4 hrs	
Bus		
Fukuoka	Oita City	2 hrs 15 mins
Nagasaki		4 hrs 10 mins
Kumamoto		4 hrs
Kyoto, Osaka, Kobe		12 hrs 30 mins
Ferry		
Kobe	Oita Port	11 hrs 30 mins
Ehime (Misaki)	Saganoseki Port	1 hr 10 mins



## Getting around Oita

**Oita Bike Share**



Bicycles at docking stations in Oita City can be used at any time as long as they are ridden between docking stations.



+81-570-783-677 (Open 24 Hours)

**Car Rentals**

**JR Rent-A-Car Oita Station Branch**

1-1-5 Kanaike Minami, Oita City  
+81-97-513-7667

**Orix Rent-A-Car Oita Ekimae Branch**

1-1-15 Kanaike-machi, Oita City  
+81-97-534-8694

**Nippon Rent-a-Car Oita Station Branch**

1-5-1 Kanaike-machi, Oita City  
+81-97-534-4500

**Times Car Rental Oita Station Branch**

1-2-12 Kanaike-machi, Oita City  
+81-97-534-0762

**NISSAN Rent a Car Oita Station Branch**

3-10 Kaname-machi, Oita City  
+81-97-534-0138

**Toyota Rent a Car Oita Ekimae Branch**

KCA Across Plaza Oita Station South 1F, 1-3-1 Higasimichi, Oita City  
+81-97-545-0155

**Budget Car Rental Oita Station Branch**

1-1-5 Kanaike Minami, Oita City  
+81-97-574-9353

**Bus**

**Oita Bus**  
+81-97-532-7000

**Oita Kotsu**  
+81-97-534-7455

**Sightseeing Taxi**

**Oita Prefecture Taxi Association**  
+81-97-558-5759

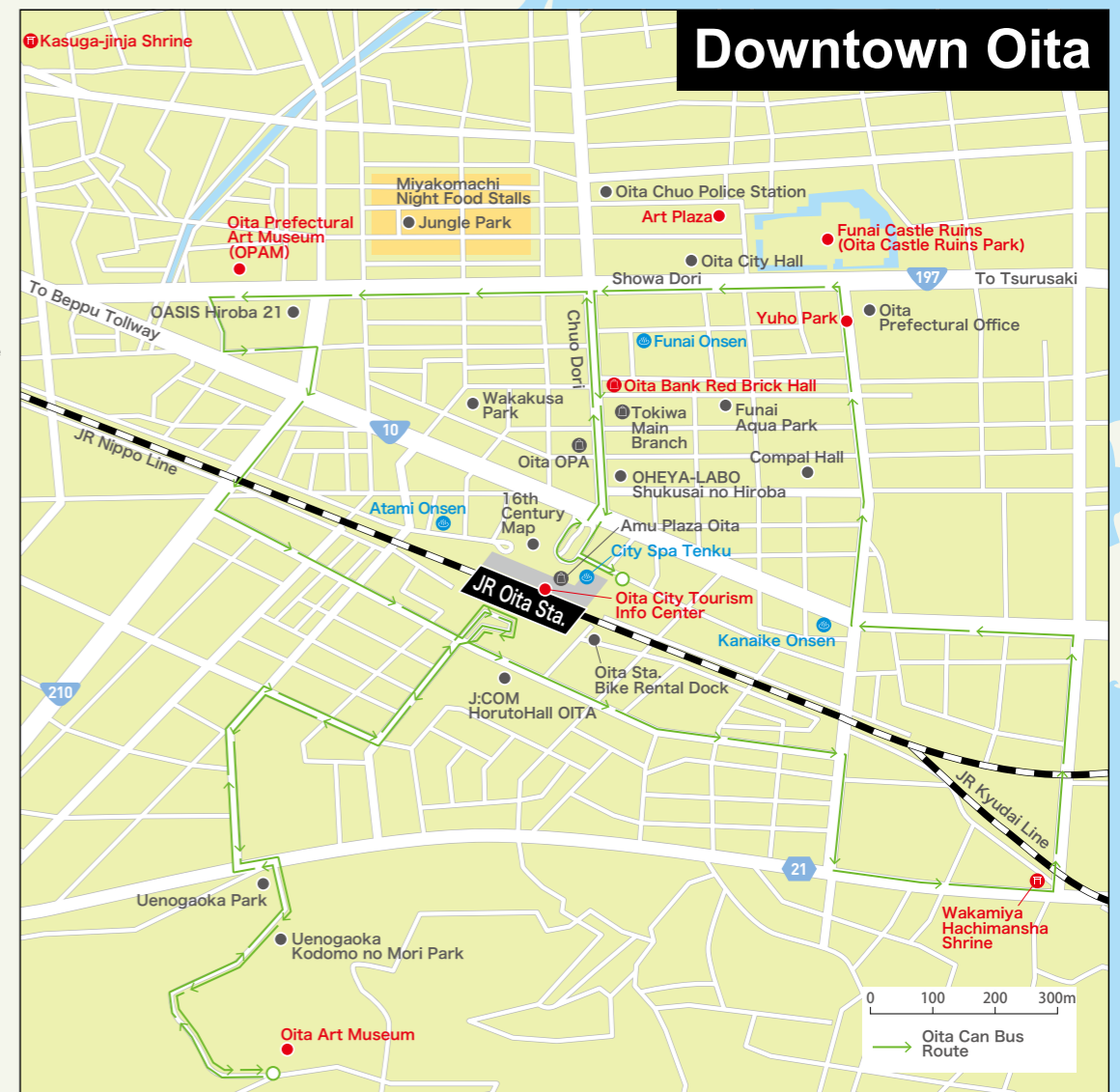
**Oita Can Bus**



Get around downtown Oita with 100 yen bus rides! One-day unlimited ride on city tour buses are also available at a reasonable price.



## Downtown Oita



0 100 200 300m

Oita Can Bus Route

# INFORMATION

## Tourism Information

Feel free to contact us for any tourism-related inquiries.

### Oita City Tourism Information Center

📍 1-1 Kaname-machi, Oita City  
(in JR Oita Station)

☎ +81-97-532-0723

🕒 8:30 am - 7:00 pm

※8:30 am to 5:00 pm  
on December 31st  
to January 2nd



Official Website



### Osaru Café

📍 Osarukan 1F,  
3078-40 Kanzaki, Oita City

☎ +81-97-536-2501

(Takasakiyama Osarukan)

🕒 9:00 am - 5:00 pm

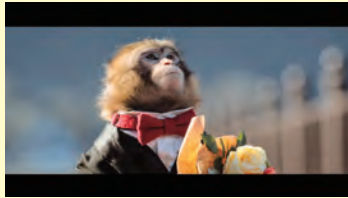


Official Website



## Oita City Tourism Promotion Videos

Get a glimpse of Oita's unique charm with our featured videos! You will surely add Oita City to your Japan travel bucket list.



SARU TABI



Oita City in 5 Minutes

Access  
the videos  
here ▶



## Onsen Oita Wi-Fi City (free Wi-Fi spot)

We also offer free internet access for your smartphone and electronic devices.

Access  
here ▶



## Accessibility Information

To ensure that anyone can enjoy their trip to Oita City, we provide information about facilities equipped with accessible restrooms and ramps.

Access  
here ▶



Check the official SNS of  
Oita City Tourism Association  
for the latest information!



Oita City  
Tourism Association  
Official Instagram



Oita City  
Tourism Association  
Official Facebook

Inquiries about sightseeing information, please contact

Oita City Tourism Association

Tel: +81-97-537-5764 Weekdays 8:30 am - 5:15 pm  
E-mail: oita-kan@oishiimati-oita.jp



Published by Oita City Tourism Division

2-31 Niage-machi, Oita City, Oita 870-8504, Japan  
Tel: +81-97-537-7043